



School District 8
Kootenay Lake



School District No. 8 (Kootenay Lake) Strategic Plan 2024-2029

Message from the board

We believe every child should be supported and inspired to thrive. We strive to prepare our students for a world that is changing at an exponential rate, and we recognize that children learn in all environments—their homes, their communities, as well as their classrooms.

Because of this understanding, all Board committees (Education, Policy, and Finance and Operations) include all trustees, district and school administrators, parents, teachers, and support staff.

Every discussion starts with the student at the forefront. Committee members contribute their perspectives for the Board's consideration in their decision-making for the district.


Collaboratively, we work towards the priorities of Lifelong Learners, Connected Learners, Caring and Inclusive Learning Culture, Cultural and Identity Development, and Career Development which we believe will best sustain each student's success.

We also believe students can broaden our perspective on how best to support their learning. We will continue to engage students and offer as many opportunities as possible for them to present and speak to us. We value their voice at our table.

SD8 is proud of our accomplishments, embraces our challenges, and knows that together we will adjust to the ever-changing context around us to focus on and maximize our students' success.

Sincerely,

The Board of Education



We are excited to work alongside our partners to develop these strategic priorities.

This is a collaborative effort, and we will hold ourselves accountable to our vision, mission, values and strategic priorities.

-  Board of Education
-  District Leaders
-  School Leaders
-  Union Partners
-  Indigenous Leadership and Communities
-  School Communities: Students, Staff, Parents
-  Advisory Groups
-  Community Partners

School District No.8 (Kootenay Lake)

Families of Schools

SD8 operates six families of schools to serve students and families in five municipalities and more than 15 rural communities across the Regional District of Central Kootenay

6
municipalities

20
schools

15+
rural communities

1
blended online learning school

900
employees

1
provincial online learning school

4800
students

15,000
square kilometres

**Provincial
Context**

60
school districts in BC

15th
largest in geographic size

32nd
by # of students enrolled



Mission

We inspire and support each learner to thrive in a caring learning environment.

Vision

Our learners grow as global citizens in an innovative and inclusive community.

Values

Our values help shape the culture of our schools and workplaces. By upholding these beliefs and attitudes, we can build learning communities that will lead to the fulfilment of our mission.

We Value...

Learners at the Centre

We support a culture of empathy, mutual respect and shared responsibility through individual and shared purpose. We provide meaningful and relevant learning experiences with opportunities for growth and improvement.

Communities of Caring and Connection

We build trusting, respectful, collaborative relationships working together to ensure we make the best decisions. We foster opportunities to promote social-emotional and physical well-being for all students and staff and celebrate our success.

Diversity and Identity

We meaningfully and equitably involve all learners and respect the unique characteristics and identity that make them individuals. Barriers are removed to create equitable environments that provide accessible and empowering opportunities for all students and staff to thrive. Truth and Reconciliation create our path forward to respect the human rights of Indigenous Peoples.

Caring for the Future

We are stewards of the future who foster lifelong learning and creative, curious, resilient global citizens to contribute to a diverse, inclusive, and sustainable society.



Our Commitments

- Our commitment is to ensure that each learner has the opportunity to be successful and is supported with high-quality services; that resources are distributed equitably; and, that students are at the centre of everything we do.
- Our commitment is to ensure support for a strong and thriving workforce. We believe that learners thrive when employees thrive. An exemplary workforce, operational excellence, and meaningful partnerships will strengthen our ability to keep our commitment.
- Our commitment will be demonstrated through services to schools, our adherence to sound financial practices, as well as how we recruit, hire, and develop the best staff in education.
- Our commitment is to responding to climate change and this will be demonstrated in our services.
- Our commitment will be sustained by measuring and reporting on our performance in key areas. Doing so reflects our responsibility to communities and our assurance to continuous improvement to support the success of our students.
- We are excited to work alongside our partners to develop these strategic priorities. This is a collaborative effort, and we will hold ourselves accountable to the vision, mission, values and strategic priorities.

A close-up photograph of a field of green plants. The background is filled with numerous small, four-lobed clover-like leaves. In the foreground, two larger, heart-shaped leaves are prominent, each with a single white flower that has three petals and a yellow center. The overall scene is lush and green.

The Strategic Priorities 2024-2029 for School District No. 8 (Kootenay Lake)

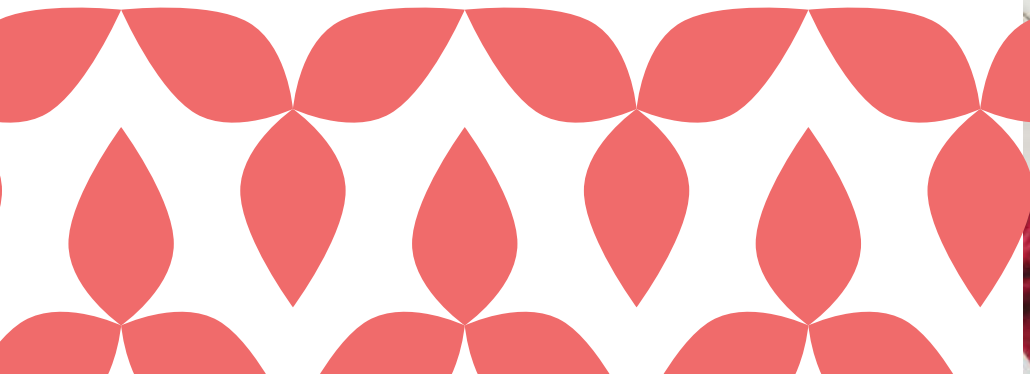
We provide opportunities for all students to reach their goals.

With a system-wide focus is on intellectual, human and social, and career development.

Our schools have a strong focus on academic success founded on literacy, numeracy, and transitions between grade levels.

We support learners from pre-kindergarten through to the post-secondary level. All learners are welcome and supported in a variety of ways along multiple pathways throughout their learning journey.

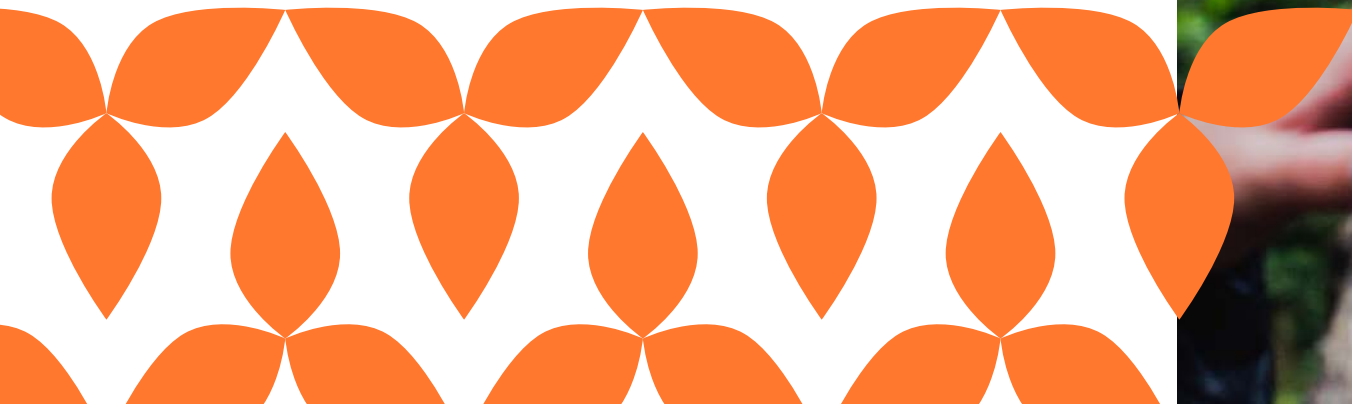
We ensure that all learners have access to educational programs to be successful.



Lifelong Learners

We improve student learning through interest-based, competency-based, **flexible and innovative approaches.**

- Engage each learner to improve and excel in literacy.
- Engage each learner to improve and excel in numeracy.
- Enhance success for early learners, learners with diverse learning needs, English language learners, and Children in Care.
- Provide opportunities for high-quality online learning and flexible, adaptable and personalized learning.






Connected Learners

We inspire learners to become curious, critical, and creative stewards of the natural world and the local and global community.

- Build knowledge, curiosity, and awareness about local and global priorities.
- Promote collaborative partnerships with the local and broader community.
- Increase opportunities for students to have a voice, to engage and to explore their interests.
- Prepare students to safely and responsibly navigate in a digital world.



A young girl with blonde hair tied back is running through a forest. She is wearing a purple t-shirt with a white Nike logo and the text 'CANADA TRACK & FIELD'. She is also wearing colorful rainbow gloves and shorts with a pink and white pattern. The background is a blurred forest with green and yellow leaves, suggesting an autumn setting. A yellow circular graphic is overlaid on the left side of the image, containing the text 'Every student needs support and inspiration to thrive'.

Every student
needs support
and inspiration
to thrive





Caring and Inclusive Learning Culture

We promote physical and mental well-being through social-emotional learning to foster compassionate learners.

- Create welcoming, engaging and accessible learning spaces.
- Promote and deepen mental and physical health and well-being.
- Enhance the social-emotional skills and capacity of learners.
- Ensure that every student feels they are safe at school and that they belong.

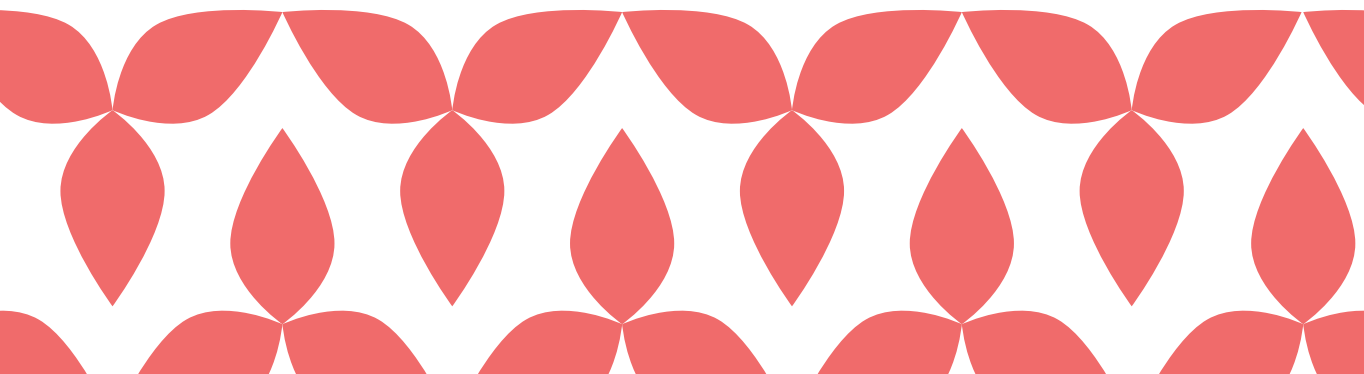


Children learn in all environments

Cultural and Identity Development

We promote a positive sense of identity in culturally safe and responsive communities of learning.

- Engage in practices that champion healing, Truth and Reconciliation.
- Include Indigenous worldviews and ways of knowing in our teaching and learning.
- Celebrate diversity by embedding opportunities for learning focused on diversity and inclusive practices.
- Increase understanding of diverse individuals in history and today.





Collaboration for
creativity and
learning



Career Development

We prepare students to graduate with options for their future life and career goals.

- Empower students to explore diverse, future-oriented career paths.
- Enhance real-world, applied financial literacy skills.
- Enhance graduation pathways for middle and secondary learners to pursue interests and passions and explore post-secondary opportunities.
- Increase collaboration with community partners to create opportunities for learners.





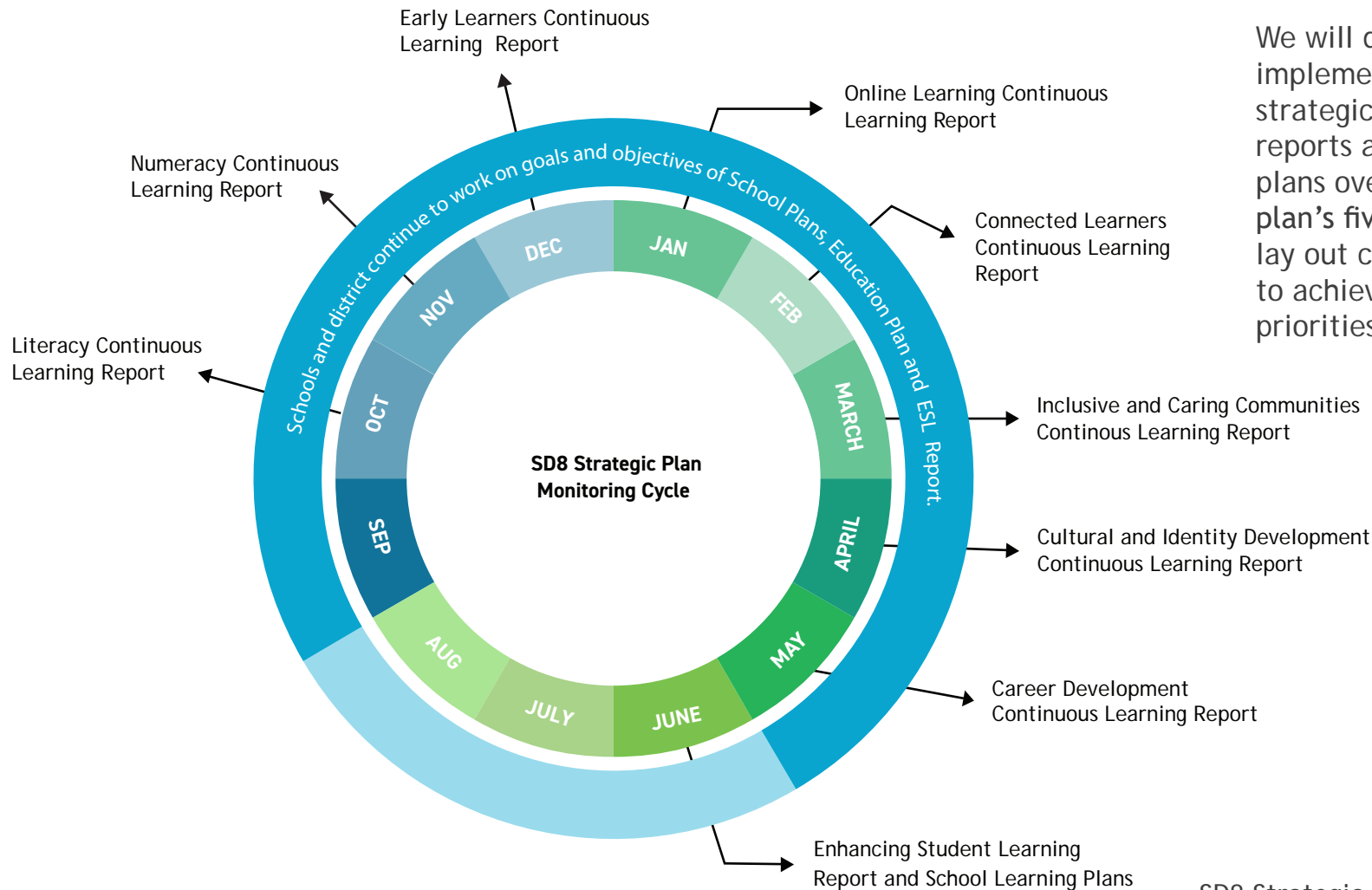
Measuring Results

A part of executing the strategic plan will include evaluating the success of the strategic priorities. The Kootenay Lake School District plans to report on these goals and execution of the plan through annual reports and partner updates.

As appropriate, quantitative and qualitative data will be captured as evidence of successful implementation or learnings. This evaluation will support further strategic planning and will help inform each of the district's operational plans.

Looking Ahead

Enhancing Student Learning Report, Continuous Learning Reports and School Learning Plans



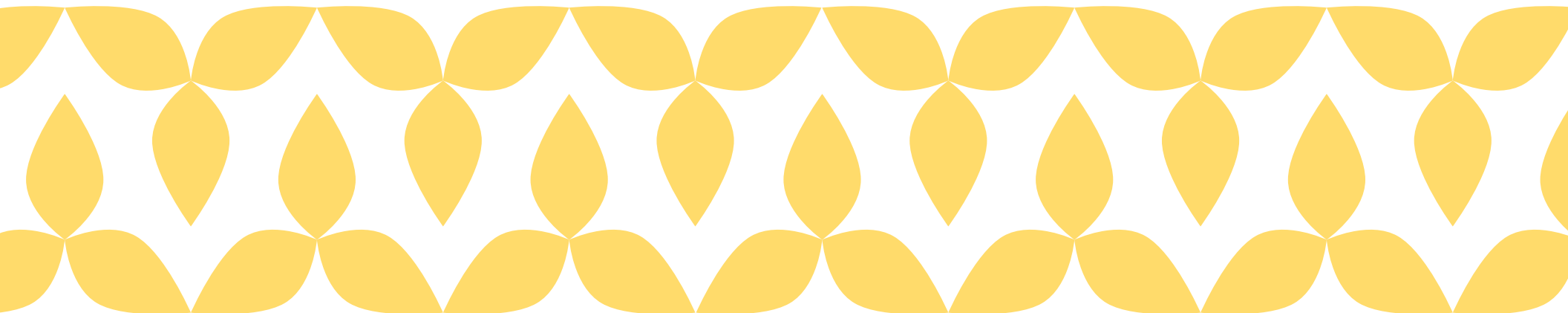
We will develop and implement annual strategic plan monitoring reports and operational plans over the strategic plan's five-year period to lay out clear action plans to achieve the strategic priorities.

Conclusion

Considerable planning and progress was accomplished thanks to the hard work, dedication and commitment of the Board of Education, staff, and all those involved in the strategic planning process. We would like to share a special thank you to all SD8 students, staff, families, educational partner groups and community members who generously donated their time to help inform this process.

We would also like to acknowledge

Mike McKay from Hadrian Consulting who supported the Kootenay Lake School District in the strategic plan's development.





School District 8
Kootenay Lake

